

180 Lake Ave North
Paynesville, MN 56362
Phone: 320-340-6464
www.master-mfg.com



MASTER
MANUFACTURING

25 GALLON
SPOT SPRAYER



SS4-01-025P-MM
Revision 1 September 2017

Note: Do not return product to the distributor/dealer for warranty work. Call Master Manufacturing at 320-340-6464 for any warranty work or replacement parts.

INTRODUCTION

Your Master Manufacturing Spot Sprayer has been manufactured to provide years of dependable and efficient use. Proper operation and maintenance will ensure long satisfactory service. The purpose of this manual is to assist you in the assembly, operation and maintenance of your sprayer or accessories. Please read through this manual completely to fully understand how to operate and maintain your equipment. Keep your manual in a safe, convenient place for future reference. Always mention the model and part number in any correspondence.

ASSEMBLY

The following instructions are intended for the spot sprayer kit to be attached to a Master Manufacturing 25 gallon spot sprayer. Please refer to the figures in this manual for reference to the following assembly instructions.



Figure 1 Attach Spray wand hose to 1/2" elbow on regulator with hose clamp(SHC-H)



Figure 2 Use a slip joint pliers to tighten hose clamp(SHC-H) to prevent hose from shooting off during operation



Figure 3 Insert pressure gauge (1124DAB200) into gauge port on regulator.



Figure 4 Screw gauge into gauge port BE SURE NOT TO OVER TIGHTEN!!! Gauge should be facing you during operation.



Figure 5 Insert rubber gasket (33-103220) into drain cap (33-103218)



Figure 6 Push cap tether onto drain cap (33-103218)



Figure 7 Drain cap should look like this with tether attached



Figure 8 Attach drain cap onto tank outlet as shown. Make sure tether is on first before screwing cap on.



Figure 9 Attach tank lid tether to tank lid by sliding "T" end through the tank hole.



Figure 10 Tank lid tether should look like this when slid through tank lid

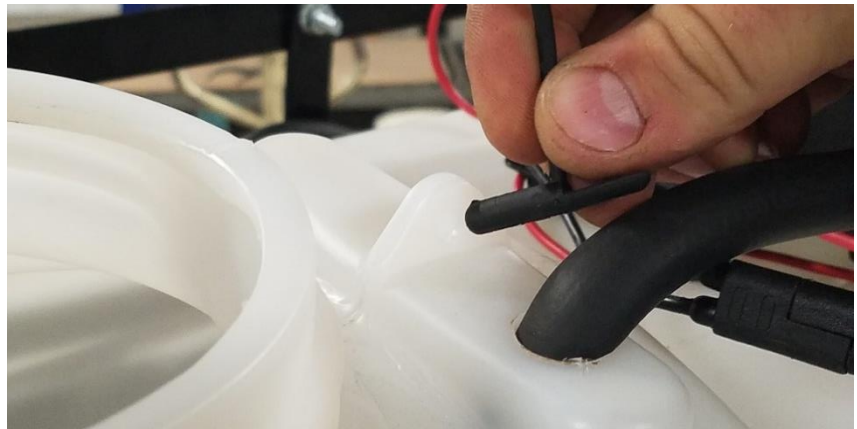


Figure 11 After tank lid and tether are attached, Slide "T" end of tether through mounting hole on tank to prevent losing tank lid.



Figure 12 Tank lid tether should look like this once slid through mounting hole on tank



Figure 13 Screw tank lid onto tank as shown

WIRING HARNESS

- 1.) Operating power is obtained directly from a 12 VDC source. Be sure to connect the red to the positive (+) source and attach the black to the negative (-) source.

IMPORTANT: Before spraying chemicals, fill the tank half full of plain water to allow familiarization with the sprayer and to prevent waste of expensive chemicals.

CLEANING & STORAGE

Most spray materials are highly corrosive. The most important aspect of long, dependable service from the sprayer is a thorough cleaning immediately following each use. In addition, the residue of one type of chemical could cause an undesirable effect when a different chemical is used for a different purpose.

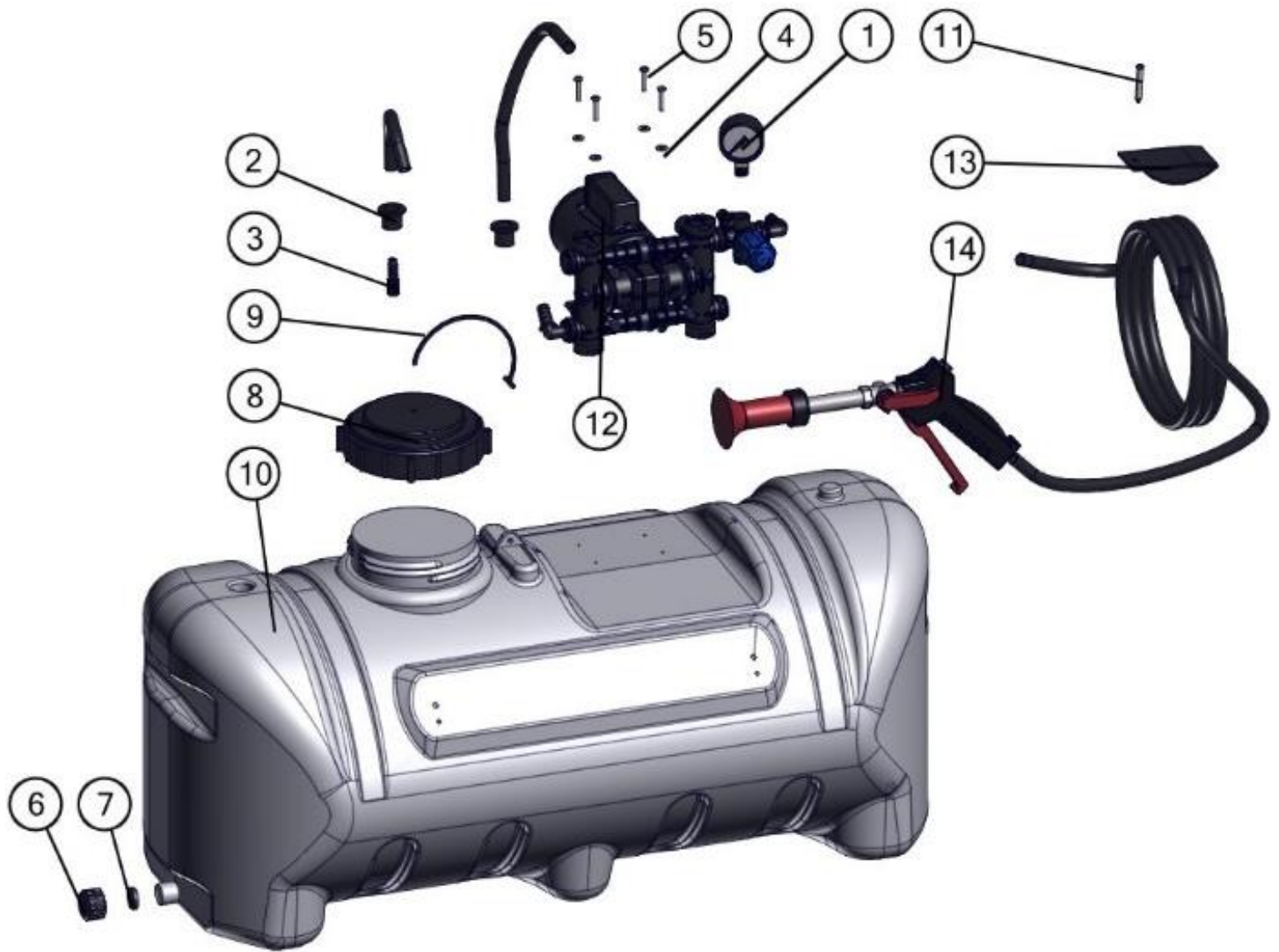
The most effective cleaning method is to pump several rinses of clean water through the tank, pump, hoses, boom, spray gun, etc. A neutralizing agent such as a solution of Nutra-Sol, a detergent or household ammonia, as recommended by the chemical manufacturer, can assist in removal of a persistent chemical. When the system is thoroughly cleaned, drain the tank, suction line, pump, hoses, etc.

The following steps should be followed for the maintenance and storage of your sprayer.

1. Wash and flush out sprayer after completion of each phase of your program. Flush out sprayer when changing chemicals if there is a possibility of the chemicals being incompatible. Use of a detergent is advisable if the chemical manufacturer does not make specific cleaning recommendations. Flush system completely, including nozzles. Never use metal objects to open clogged nozzles.
2. Clean sprayer thoroughly before storing at the end of the spraying season. Permanent type anti-freeze added to the final rinse will leave a rust inhibiting film in parts of the sprayer.

WARRANTY PARTS SERVICE

Products sold shall be warranted from defects in workmanship and material when used within the service and scope for which they were designed for a period of one year from date of purchase. Warranty covers replacement parts ONLY. Contact Master Manufacturing for warranty parts at 320-340-6464. Do not return product to your distributor/dealer. Please have your original sales receipt or other proof of purchase date when requesting any warranty parts. To ensure the correct parts are acquired always provide the model number of your sprayer/attachment and the part number and description obtained from the illustrated parts breakdown in this manual.



BOM ID	Name	Description	Qty
1	1124DAB200	GAUGE,2"ABS 1/4"LM 200PSI	1
2	33-100098	GROMMET, TOP HAT, BLACK, 3/4" HB, 1/2" HOSE	2
3	33-103122	3/8 BARB TO 3/8 MALE PIPE THEAD	1
4	33-103127	GROMMET, TOP HAT, BLACK, 3/4" HB, 1/2" HOSE	4
5	33-103131	WASHER, #10, ZINC	4
6	33-103218	Outlet Cap, 3/4" Black	1
7	33-103220	Gasket, 3/4" SuperSeal	1
8	33-103221	Lid, Tank, 5"W .25" Hole	1
9	33-103222	LANYARD, LID SHORT BLACK	1
10	33-103230	TANK, 25 GAL, SPRAYER	1
11	33-300013	SCREW,1/4"-14 x 3/4" PHILLIPS PAN HEAD, DRILLING	1
12	EFHP-2000-Box	PLUNGER PUMP, HIGH PRESSURE, 200PSI, 12V	1
13	RTS2.0-14.125	STRAP, RIP TIE, NYLON, 2" WIDTH, 14-1/8" LONG	1
14	SG-2200	SPRAY GUN, LONG RANGE, SHORT BARREL	1

34-140162
REGULATOR, ASSY, SPRAYER, 200PSI

