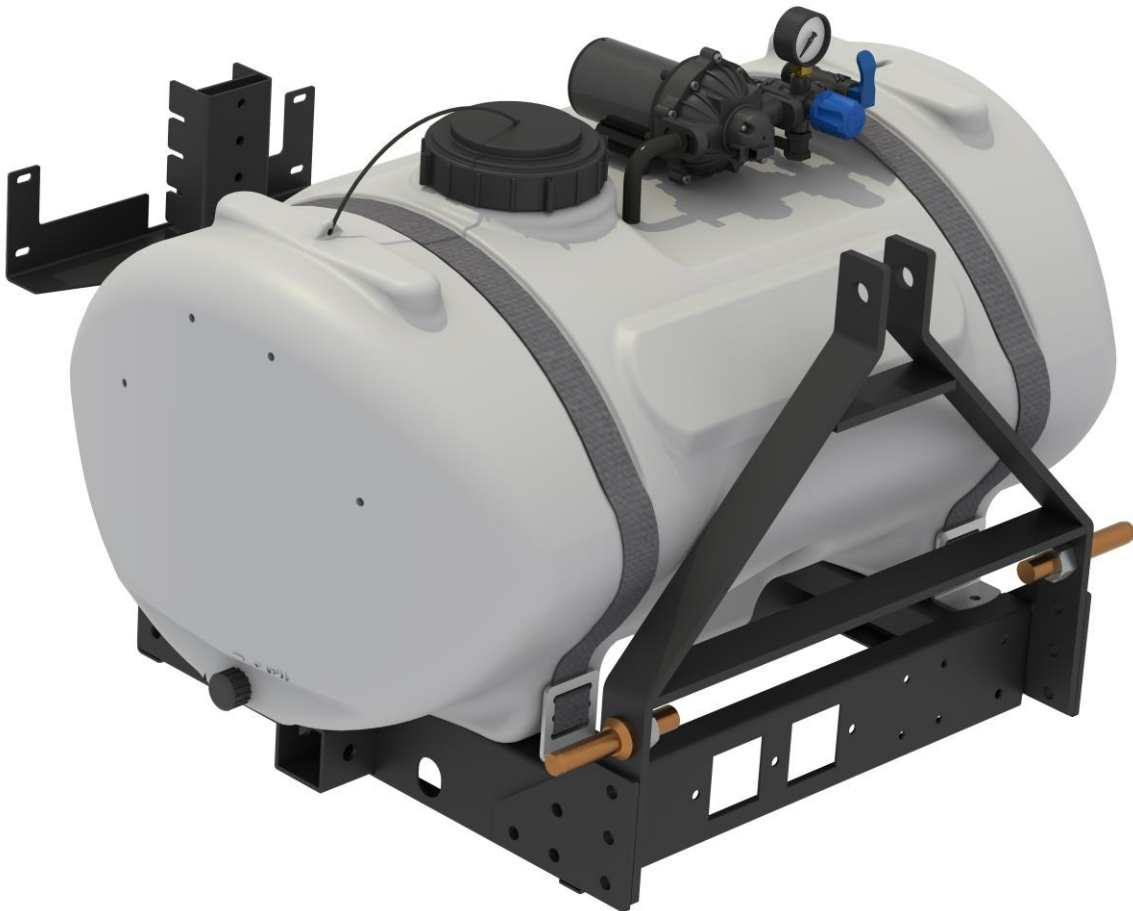


180 Lake Ave North  
Paynesville, MN 56362  
Phone: 320-340-6464  
www.master-mfg.com



**MASTER  
MANUFACTURING**

**40/60 GALLON FLEX FRAME 3 POINT**



Part Number SFFK-4060S3B-MM | Rev 1 Aug. 2017

**Note: Do not return product to the distributor/dealer for warranty work. Call Master Manufacturing at 320-340-6464 for any warranty work or replacement parts.**

### INTRODUCTION

Your Master Manufacturing Flex Frame Trailer Kit has been manufactured to provide years of dependable and efficient use. Proper operation and maintenance will ensure long satisfactory service. The purpose of this manual is to assist you in the assembly, operation and maintenance of your sprayer or accessories. Please read through this manual completely too fully understand how to operate and maintain your equipment. Keep your manual in a safe, convenient place for future reference. Always mention the model and part number in any correspondence.

### Warnings

- △ **Tank and skid frame must be securely fastened to vehicle to ensure proper handling. Failure to fasten tank securely to vehicle may lead to injury.**
- △ **Tank total weight filled with liquid must not exceed manufactures weight limit for vehicle. Refer to vehicle manufacture specifications**

### TOOLS REQUIRED FOR ASSEMBLY

The following tools are required to assemble the Flex Frame Trailer Kit.

3/4" COMBINATION WRENCH



3/4" SOCKET WRENCH

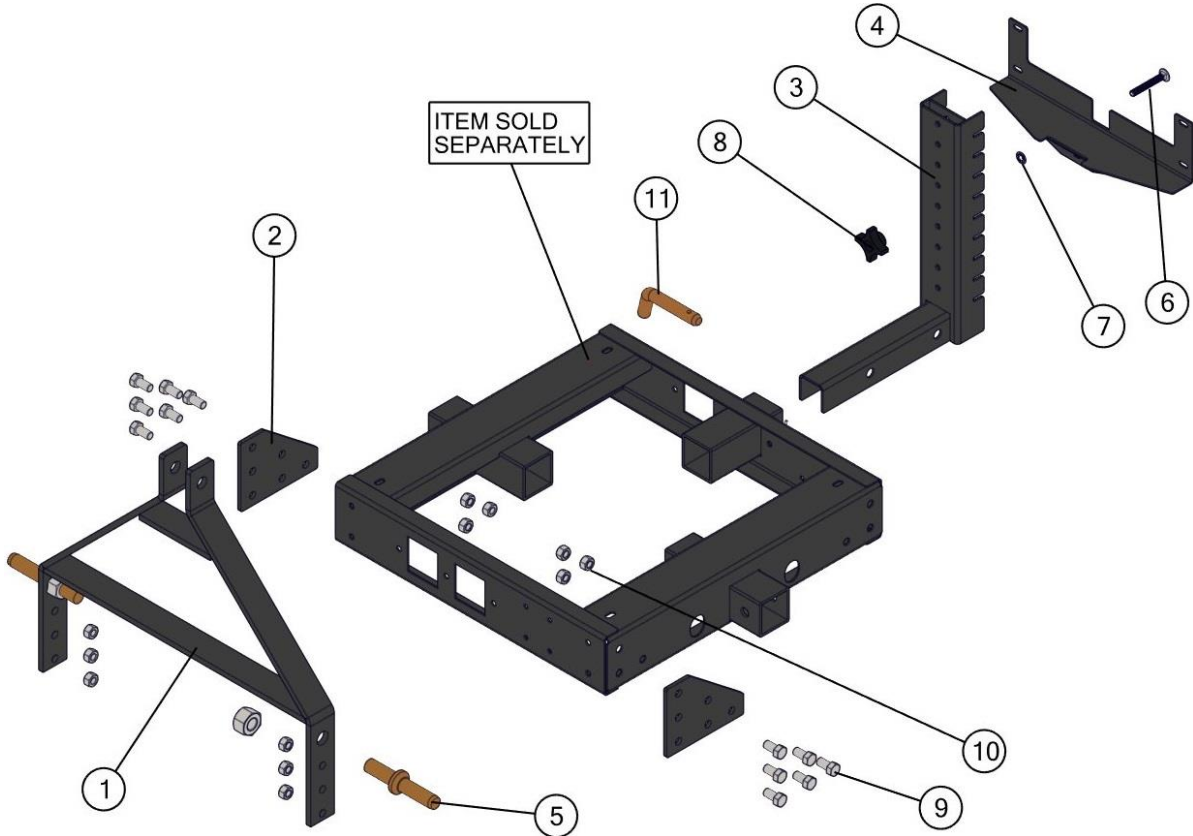


PLIERS



## FLEX FRAME 3 POINT

### KIT CONTENTS



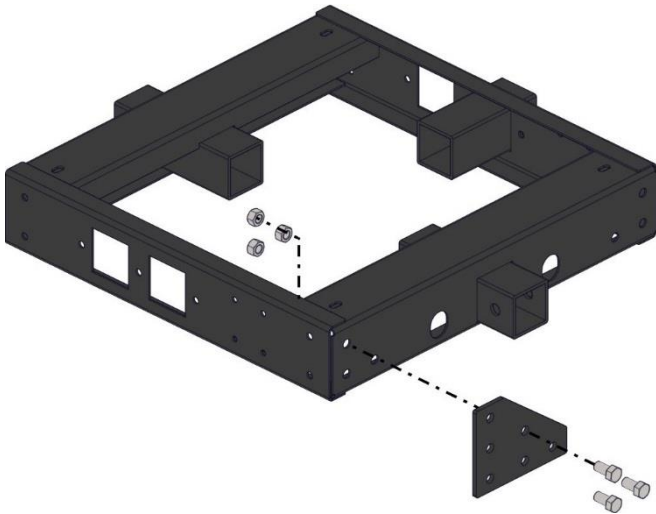
BOM ID	Name	Description	Qty
1	32-100079	FRAME, 3PNT LINK, 40/60 ECONO	1
2	31-100236	BRACKET, 3PNT, FLEX FRAME, 40/60	2
3	32-100104	QA BOOM POST, FLEX FRAME, 40/60	1
4	32-100103	MOUNT, ROOM, FLEX FRAME, 40/60	1
5	152IP	IMPLEMENT PIN	2
6	33-100039	BOLT, CARRIAGE, 3/8-16 x 2.75"	1
7	33-100041	PUSH NUT	1
8	33-100040	KNOB, 4-ARM, 3/8-16, THRU	1
9	33-100177	BOLT, 1/2-13 X 1.25"	12
10	33-100133	NUT, 1/2-13, HEX	12
11	722HP	BENT PIN, 5/8" X 3"	1

## **ASSEMBLY INSTRUCTIONS**

The Trailer Kit has been specifically designed to attach easily to the 40 and 60 Gallon Master Manufacturing Flex Frame. Please refer to the figures in this manual for reference to the following assembly instructions.

### **NOTES:**

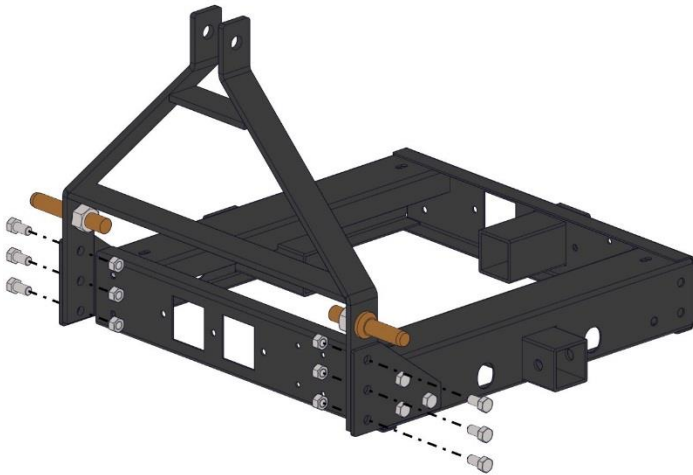
- The tank is hidden to better show the locations of mounting holes in the frame.
- When assembling the kit, take note of the location and direction of the controls to ensure that they will be accessible while operating the sprayer.



### **Step 1**

Using (3) of the 1/2-13 bolts (33-100177) and (3) 1/2-13 nuts (33-100133), attach the Bracket (33-100236) to the Flex Frame.

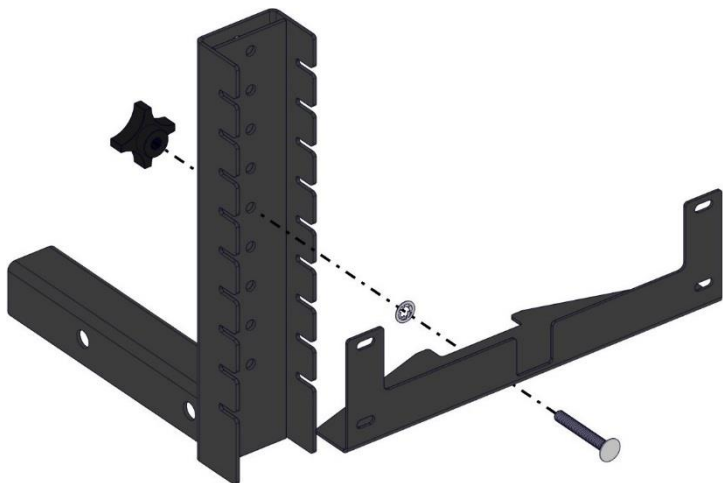
Repeat on opposite side of Frame.



### **Step 2**

Using (6) of the 1/2-13 bolts (33-100177) and nuts (33-100133), attach the Link Frame (32-100079) to the Brackets.

## FLEX FRAME 3 POINT

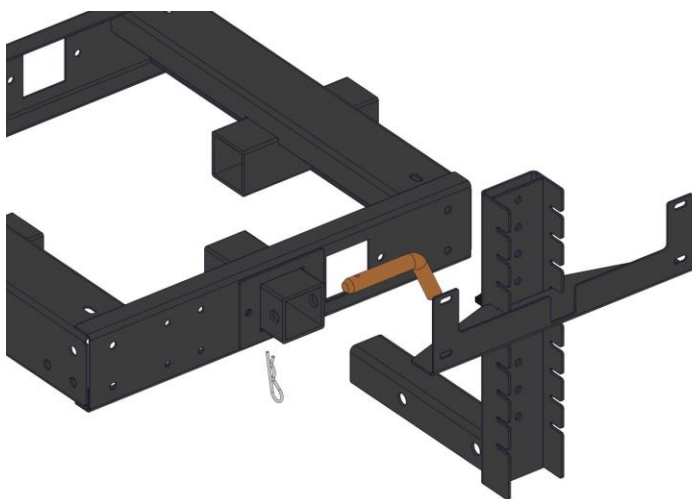


### Step 3

Insert the Carriage Bolt (33-100039) through the hole in the Boom Mount (32-100103) and secure with the Push Nut (33-100041) as shown.

Attach the Boom Mount (32-100103) to the Boom Post (32-100104) and secure with the Knob (33-100040).

Refer to the Operation Instructions in your Boom manual for mounting height.



### Figure 4

Insert the Boom Post into the Receiver and secure with the 5/8" Bent Pin (722HP), then secure the Bent Pin with the Reusable Cotter Pin.

Your 3 Point Sprayer is now ready for a boom. Refer to the manual included with your Boom Kit for mounting instructions.

## WARRANTY PARTS SERVICE

Products sold shall be warranted from defects in workmanship and material when used within the service and scope for which they were designed for a period of one year from date of purchase. Warranty covers replacement parts ONLY. Contact Master Manufacturing for warranty parts at 320-340-6464. Do not return product to your distributor/dealer. Please have your original sales receipt or other proof of purchase date when requesting any warranty parts. To ensure the correct parts are acquired always provide the model number of your sprayer/attachment and the part number and description obtained from the illustrated parts breakdown in this manual.