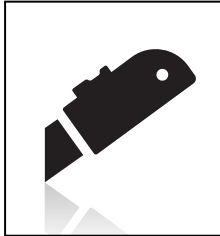


**INCLUDED COMPONENTS**

**TOOLS REQUIRED**



1/2" SOCKET WRENCH



KNIFE



**NOTE:**  
**IF YOU PURCHASED A COMPLETED BROADCAST SPRAYER, FOLLOW THE SPOT SPRAYER MANUAL AND MOUNT KIT ASSEMBLY INSTRUCTIONS BEFORE YOU COMPLETE BOOM ASSEMBLY STEPS.**

**SPRAYING SIMPLE** **FREE**  
 MOBILE SPRAY ASSISTANT

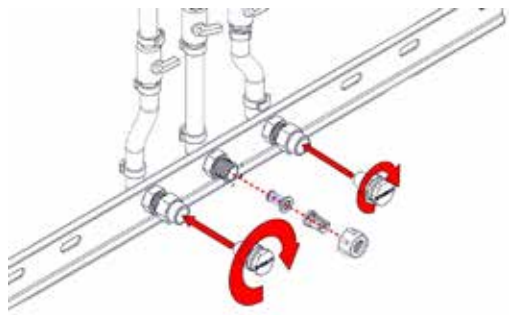


INTEGRATE YOUR SPRAY EQUIPMENT AND ACREAGE. CALCULATE YOUR NEEDED LIQUID AND APPLICATION SPEED.

**1. PARTS**

**TOOLS**

None



Thread Boomless Nozzles into the open outer ports and verify they point toward the bottom of the Boom Assembly.

Unthread the middle Nozzle Body Nut and drop Nozzle into the Nut. Re-thread Nozzle Body Nut onto Nozzle Body. Confirm that Nozzle's orifice is facing out from the Boom Assembly.

**NOTE:** Mesh Inlet Strainer might come out of Nozzle Body during unthreading of Nut. Make sure this is inserted back into the Nozzle Body in the same orientation it came out.

Adds Nozzle to Nozzle Body



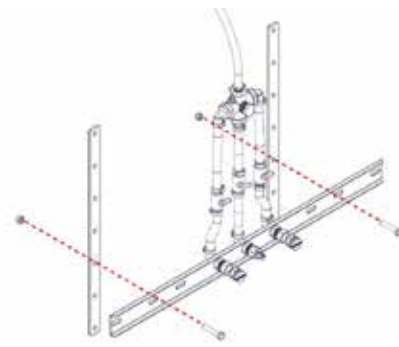
**2. PARTS**

**TOOLS**



Secure Boom Assembly to Boom Upright Brackets with 1" Bolts and Flange Nuts. Tighten with Socket Wrench.

Use remaining 1" Bolts and Flange Nuts to install Boom Assembly with Boom Upright Brackets to Mount Kit.



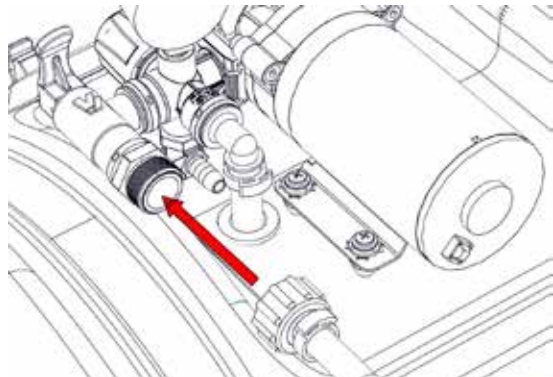
**NOTE:** Boom Upright Brackets may not be needed. Consult Mount Kit Assembly instructions.

Attaches Boom Upright Brackets to Boom



### 3. PARTS

### TOOLS



**NOTE:** Use a Knife to cut zip tie from Boom Assembly to free the Boom Hose.

Connects Boom Assembly to Shut-Off Valve



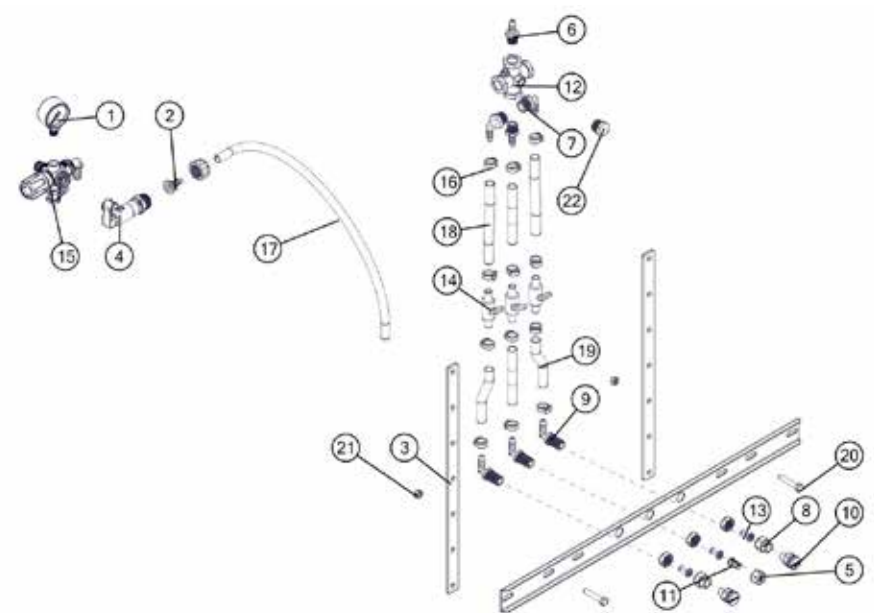
Locate Boom Hose and make sure there is Washer in the end of Boom Cap.

Thread the Boom Hose to the Shut-Off Valve.

### T. SSBK-3TDNB BOOM TROUBLESHOOTING

| PROBLEM                 | CAUSE                              | SOLUTION                             |
|-------------------------|------------------------------------|--------------------------------------|
| Boom Doesn't Spray      | Bad Electrical Connection          | Check Battery Connections            |
|                         | Boom Shut-Off Valve                | Flip On Shut-Off Valve               |
| Irregular Spray Pattern | Clogged Strainer                   | Unclog Strainer                      |
|                         | Pinched Or Clogged Hose            | Unpinch or Unclog Hose               |
|                         | Clogged Nozzles                    | Unclog Nozzles                       |
|                         | Damaged Spray Nozzles              | Replace Nozzles                      |
|                         | No Nozzles In Boom                 | Install Nozzles Into Boom            |
|                         | Incorrect Nozzle Size              | Replace with Correct Nozzles         |
| Boom Leaks              | Nozzle Facing Wrong Direction      | Adjust Nozzle To Correct Designation |
|                         | Loose Fasteners                    | Tighten Fasteners                    |
|                         | Loose Connection To Shut-Off Valve | Tighten Boom To Shut-Off Valve       |
| Nozzles Drip After Use  | Damaged Boom Hose                  | Replace Hose or Boom Kit             |
|                         | No Ball Check Strainers            | Install Ball Check Strainers         |

### B. SSBK-3TDNB BOOM BREAKDOWN



| ID | Part Number               | Description                           | Qty |
|----|---------------------------|---------------------------------------|-----|
| 1  | 1124DAB100                | Pressure Gauge                        | 1   |
| 2  | 3C38                      | Flat Seat Hose Barb - 3/8"            | 1   |
| 3  | 31-100160                 | Boom Upright Brackets                 | 2   |
| 4  | 34-140161                 | Shut-Off Valve                        | 1   |
| 5  | 38207                     | Nozzle Nut - 11/16" FPS               | 1   |
| 6  | 3A1238                    | Straight Fitting - 1/2" MPT x 3/8" HB | 2   |
| 7  | 3EL1238                   | Elbow - 1/2" MPT x 3/8" HB            | 2   |
| 8  | 3NF1614                   | Coupling - 1/4" FPS x 11/16" FPT      | 2   |
| 9  | 3NTL38-C                  | Straight Elbow - 11/16" MPS x 3/8" HB | 3   |
| 10 | BN2BP088RSX & BN2BP088LSX | Left & Right Boomless Nozzle - 2.2GPM | 2   |
| 11 | DF3.0                     | Gray Deflector Nozzle                 | 1   |

| ID | Part Number | Description                   | Qty |
|----|-------------|-------------------------------|-----|
| 12 | GCR1214-BN  | Cross - 1/2" FNPT x 1/4" FNPT | 1   |
| 13 | NS-50       | Nozzle Strainer - 50 Mesh     | 3   |
| 14 | PBV-38HB    | Ball Valve - 3/8" HB          | 3   |
| 15 | 33-140158   | Pressure Regulator Assembly   | 1   |
| 16 | SHC-F       | Snapper Hose Clamps - 3/8"    | 14  |
| 17 | 33-103153   | Rubber Hose - 3/8"            | 7   |
| 19 |             |                               |     |
| 20 | 33-100116   | Bolts - 1"                    | 6   |
| 21 | 33-100113   | Flange Nuts                   | 6   |
| 22 | 3F14        | Hex Plug - 1/4" MPT           | 1   |