



180 Lake Ave North
Paynesville, MN 56362
Phone: 1-800-864-1649
www.master-mfg.com



MASTER
MANUFACTURING

40/60 GALLON LAWN SPRAYER KIT



Part Number's SSFK-4000SL-MM
SSFK-6000SL-MM | Rev 1 March 2009

Note: Do not return product to the distributor/dealer for warranty work. Call Master Manufacturing at (800) 864-1649 for any warranty work or replacement parts.

INTRODUCTION

The purpose of this manual is to assist you in the assembly, operation and maintenance of your sprayer or accessories. Please read through this manual completely too fully understand how to operate and maintain your equipment. This product has been manufactured to provide years of dependable service; proper operation and maintenance will ensure its dependability. Keep your manual in a safe, convenient place for future reference. Always mention the model and part number in any correspondence.

ASSEMBLY

Master Manufacturing's Lawn Sprayer Frame Kit has been specifically designed to attach easily to a Master Manufacturing skid frame with either a 40 or a 60 gallon tank. This kit also provides a boom mount for many different spray booms. Please refer to the figure in this manual for reference to the following assembly instructions.



Frame Assembly

- 1.) Remove components from carton.
- 2.) The Adjustable Tongue (PN 32-100067) can be attached to either end of the skid frame. The tongue should be attached to the end of the skid frame farthest from the electric pump. This will ensure the spray boom hose will be long enough to attach to the pump. Attach tongue using three 5/16-18 x 1" cap screws (PN33-100116) and three 5/16-18" serrated nuts (PN 33-100113). Tighten securely.
- 3.) Attach Adjustable Hitch (PN 32-100066) to Tongue (PN 32-100067) with two 3/8-16x1" bolts and 3/8-16" nuts (PN 33-100125). The adjustable hitch can be raised and lowered to adjust tongue to desired height.
- 4.) Raise back end of sprayer and place on blocks to allow easier access to axel location. Ensure sprayer is firmly supported. Locate axel PN 34-140048 (60 Gallon) or axel 32-100062 (40 Gallon) underneath skid frame aligning holes in axel with holes in frame. The axel must be located with the holes in skid frame **farthest** from the tongue attached in step 2. Fasten axel to skid frame with four 5/16-18 x 1" cap screws (PN 33-100116), four 5/16" washers (PN 33-100115) and four 5/16-18" serrated nuts (PN 33-100113). Tighten securely.
- 5.) **60 gallon sprayers** mount two wheels (PN TWA-18X7-8/4HOLE) onto axels and fasten with the lug nuts provided. Tighten securely. **40 gallon sprayers** slide two wheels (PN TWA-15X600-6) over axel shaft and secure with cotter pin (PN 33-100127) by bending.
- 6.) Attach Boom Mount (PN 32-100063) to end of skid frame using four 5/16-18" x 1" cap screws (PN 33-100116) and four 5/16-18" nuts (PN 33-100113).
- 7.) Ensure tires are inflated to proper pressure.

Boom Mounting

- 1.) Following directions provided with boom manufacturer, mount boom to angle brackets.

Warnings

-  **Ensure all trailer bolts are securely tightened and tires are properly inflated before each use. Failure to do so may lead to injury.**
-  **Trailer total weight with filled tank must not exceed maximum towable weight limit set by manufacture of pulling vehicle. Refer to vehicle manufactures specifications. Failure to follow manufactures specifications may lead to injury or breakdown.**

WARRANTY PARTS SERVICE

Products sold shall be warranted from defects in workmanship and material when used within the service and scope for which they were designed for a period of one year from date of purchase. Warranty covers replacement parts ONLY. Contact Master Manufacturing for warranty parts at (800) 864-1649. Do not return product to your distributor/dealer. Please have your original sales receipt or other proof of purchase date when requesting any warranty parts. To ensure the correct parts are acquired always provide the model number of your sprayer/attachment and the part number and description obtained from the illustrated parts breakdown in this manual.

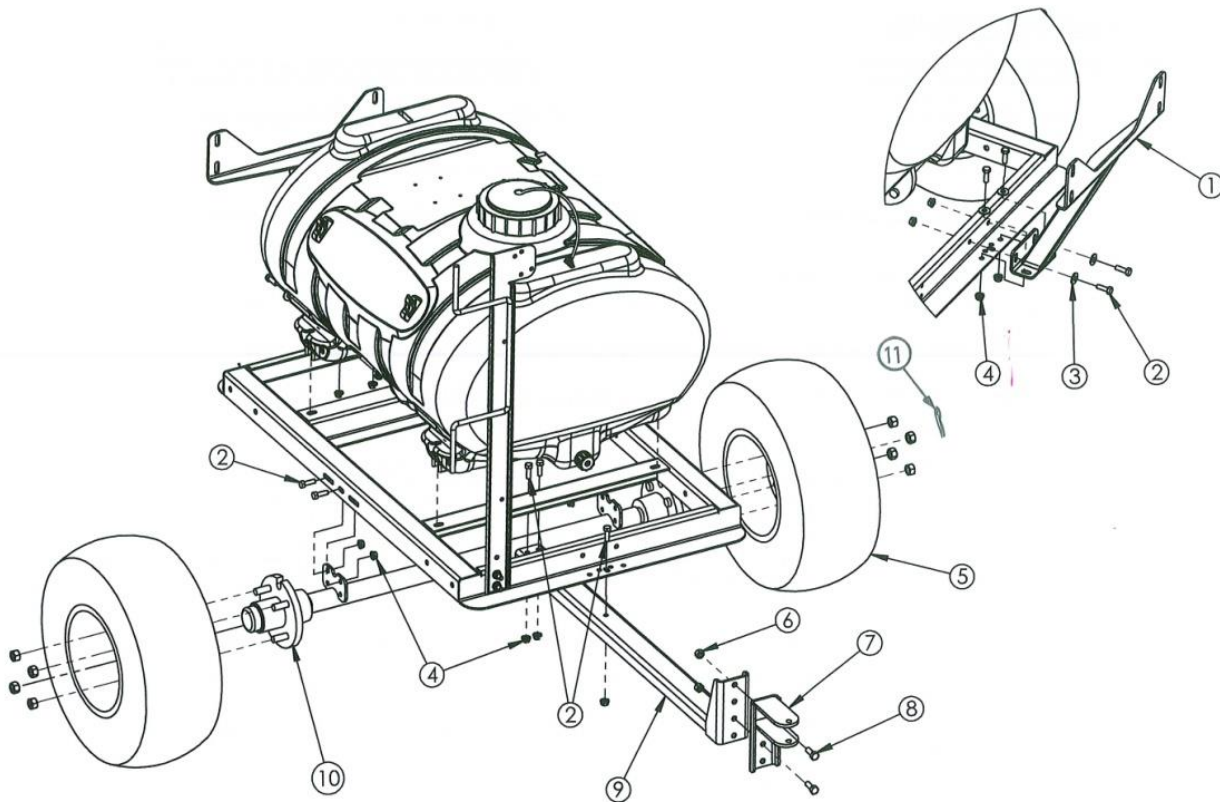


Figure #3
Axel, Hitch and Wheel Assembly

Item No.	Part Number	Description	Qty.
1	32-100063	Mount, Boom	1
2	33-100116	Screw, cap, 5/16-18 x 1"	11
3	33-100115	Washer, 5/16	4
4	33-100113	Nut, 5/16-18, serrated	11
5	TWA-18X7-8/4HOLE	Tire and Wheel Assembly, 60 Gallon	2
	TWA-15X600-6	Tire and Wheel Assembly, 40 Gallon	2
6	33-100125	Nut, 3/8-16"	2
7	32-100066	Hitch, Adjustable	1
8	33-100124	Cap screw, 3/8-16 x 1"	2
9	32-100067	Tongue, Hitch	1
10	34-140048	Axel, Heavy duty, 60 Gallon	1
	32-100062	Axel, 40 Gallon	1
11	33-100127	Cotter Pin, 40 Gallon only	2