

180 Lake Ave North
Paynesville, MN 56362
Phone: 320-340-6464
www.master-mfg.com



MASTER
MANUFACTURING

40 & 60 GALLON 3-POINT SPRAYER



Rev 5 Dec. 2017

ASSEMBLY

Sprayer assembly has been completed at the factory except for the roller pump that must be supplied by the customer. This unit is designed to work with a 4 or 6 roller pump that will be attached directly to the tractor PTO.

Two nylon hose fittings and hose clamps have been provided to join to the pump. Use a good quality thread sealant on each fitting to prevent leaks. After the fittings have been inserted to the pump, push on the two pump hoses to the fittings and secure with the clamps provided.

OPERATION

Check the inside of the tank for any foreign objects or material that could cause damage to the pump.

Fill the tank with clean water. It is always better to have the tank at least half full of water before adding the chemical to avoid possible damage to the sprayer components by an undiluted chemical concentrate.

Before initially running the sprayer, loosen the tee handle of the relief valve. This adjustment should be checked while spraying because a pressure increase will be noted when the sprayer is shut off and the output of the pump is by-passed back to the tank through the relief valve.

Limit the pressure to 150 psi. If, when adjusting the relief valve for more pressure, no increase in pressure occurs, it is an indication that the maximum output of the pump is being used. When the sprayer is shut off the pump will have to overcome the excessive tightness of the relief valve in order to by-pass back to the tank. This will cause pump strain and possible damage and should be avoided.

Choose an operating pressure that provides a spray pattern suitable for the particular operation. Follow the chemical manufacturer's recommendations for mixing and rates of application carefully. Judge the area sprayed tank full of spray material carefully to avoid over or under application rates. Do not use your sprayer for pumping petroleum products, strong acids, paint or other thick materials with heavy viscosity.

GENERAL SPRAYER MAINTENANCE

Most spray materials are highly corrosive. The most important aspect of long dependable service from the sprayer is a thorough cleaning immediately following each use. In addition, the residue of one type of chemical could cause an undesirable effect when a different chemical is used for a different purpose.

The most effective cleaning method is to pump several rinses of clean water through the tank, pump, hose and spray gun. A neutralizing agent such as a solution of Nutra-Sol, detergent or household ammonia as recommended by the chemical manufacturer can assist in removal of a persistent chemical. Avoid getting chemical on the engine and other external parts of the unit in order to preserve the finish. Remove external spray material deposits when cleaning and flushing unit. A coat of wax applied to the exterior will protect the paint and make clean up easier.

When the unit is thoroughly cleaned, remove the tank filter bowl and drain the water from the tank, spray gun, pump boom and spray gun hose.

TROUBLESHOOTING

In the event of inefficient operation or malfunction, check the following:

1. Clean the line strainer after each use or more often, if necessary. A plugged strainer will restrict the flow of liquid to the pump and cause it to perform poorly. Always use clean water and keep the strainer screen in place. Sandy or gritty liquids will damage the components of the pump.
2. Check the hoses for any kinks or leaks. Be sure that suction hose is not collapsed or plugged.
3. Nozzle tips should be removed and cleaned with a toothpick or similar object. Avoid nails, wires, etc., that could damage the top opening. The nozzle screens of the boom accessory should also be removed and cleaned periodically. Inspect and replace worn tips to insure satisfactory spraying performance

STORAGE

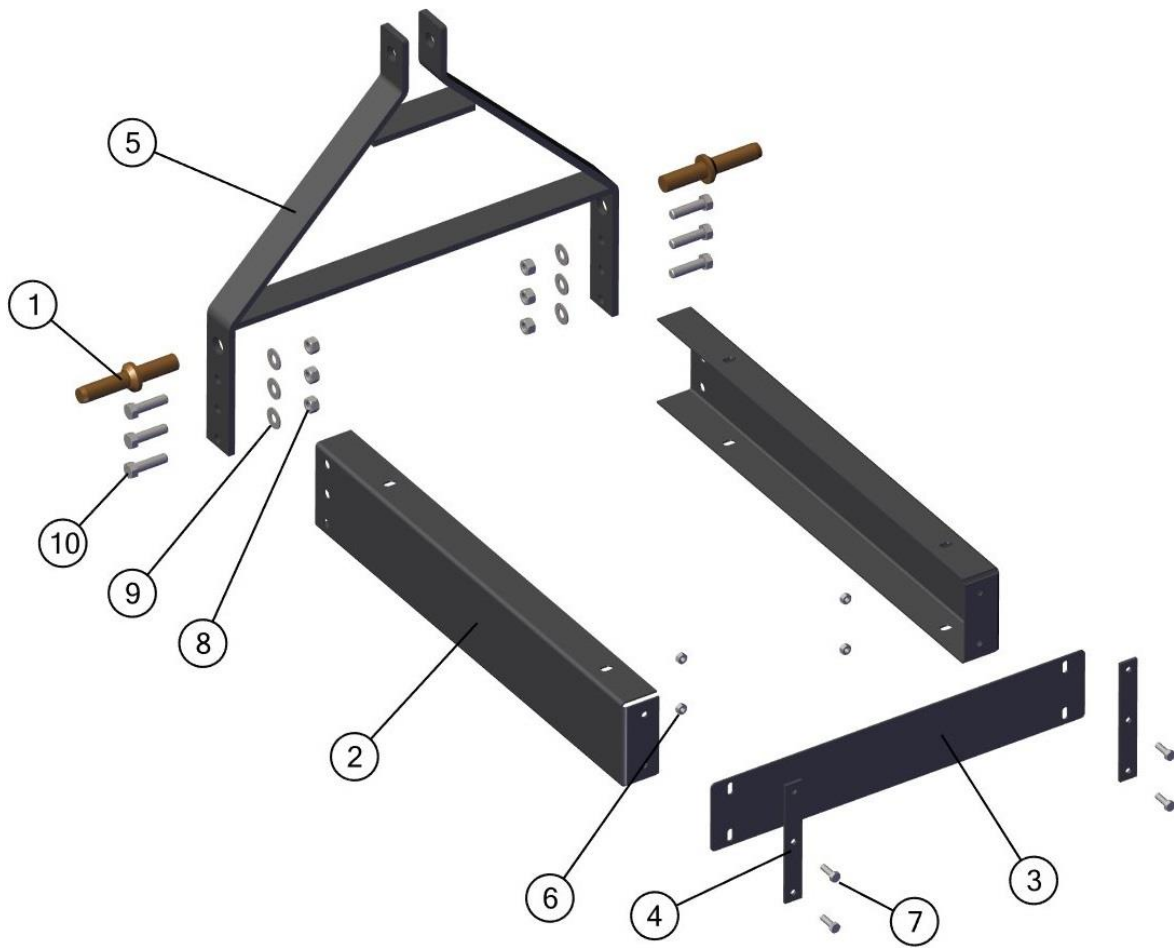
This sprayer should always be cleaned and drained before storage. If the unit will be subjected to freezing temperatures, it is imperative that the whole sprayer; pump, hoses, spray gun, gauge, etc., be completely drained and dry. Any water left in the system could cause extensive damage when it freezes. Follow the recommendations of the pump instructions for preventing internal pump corrosion and protection against the rotor and rollers gumming and sticking during storage.

WARRANTY PARTS SERVICE

Products sold shall be warranted from defects in workmanship and material when used within the service and scope for which they were designed for a period of one year from date of purchase. Warranty covers replacement parts ONLY.

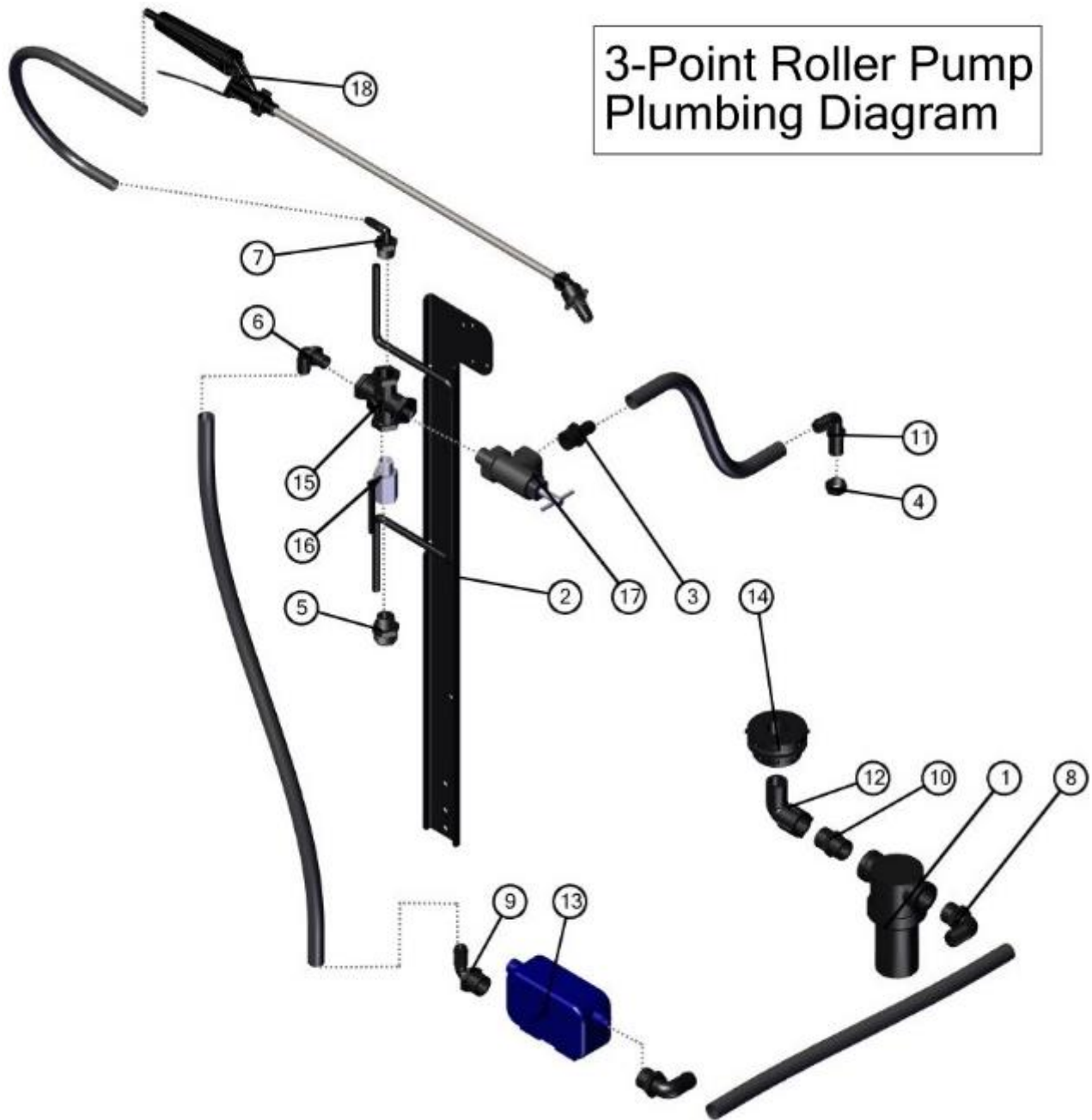
Contact Master Manufacturing for warranty parts at 320-340-6464. Do not return product to your distributor/dealer. Please have your original sales receipt or other proof of purchase date when requesting any warranty parts. To ensure the correct parts are acquired always provide the model number of your sprayer/attachment and the part number and description obtained from the illustrated parts breakdown in this manual.

3 Point Frame Assembly



BOM ID	Description	Qty	Description
1	152ip	2	IMPLEMENT PIN
2	31-100181	2	RAIL, 40/60 ECONO 3PNT
3	31-100182	1	MOUNT, BOOM, 4060, ECONO 3 PNT
4	31-100187	2	BRACKET, BOOM, ECONO, 3PNT
5	32-100079	1	FRAME, 3PNT LINK, 4060 ECONO, 3PNT
6	33-100113	4	NUT, 5/16-18, SERRATED FLANGE
7	33-100116	4	BOLT, 5/16-18 X 1"
8	33-100133	6	NUT, 1/2-13
9	33-100134	6	LOCK WASHER, 1/2"
10	33-100177	6	BOLT, 1/2-13 X 1.25"

3-Point Roller Pump Plumbing Diagram



BOM ID	Name	Description	Qty
1	11263	STRNR, 3/4" EPDM, 40M, Poly	1
2	32-100035	SPRAYER, CONTROL POST	1
3	3A3412	Straight: 3/4" MPT x 1/2" HB Poly	1
4	3B12	Nozzle Nut: 11/16" Poly	1
5	3E3412	Adapter: 3/4"MGHT x 1/2"MPT Poly	1
6	3EL12	Elbow: 1/2"MPT x 1/2"HB Poly	1
7	3EL1238	Elbow: 1/2"MPT x 3/8"HB Poly	1
8	3EL34	Elbow:3/4" MPT x 3/4" HB Poly	2
9	3EL3412	Elbow: 3/4" MPT x 1/2" HB Poly	1
10	3M34	Nipple: 3/4" MPT x 3/4" MPT Poly	1

BOM ID	Name	Description	Qty
11	3NTL12-C	Elbow: NzThd-11/16MPS x 1/2"HB	1
12	3SE34	Straight Elbow: 3/4" MPT x 3/4" FPT	1
13	6600C	Pump, 6 Roller, Cast Iron	1
14	BHF34	Bulk Head Fitting	1
15	GCR1214-BN	CROSS, NYLON, 1/2" FNPT X 1/4" FNPT	1
16	MVL12FM	Valve, Ball, 1/2", FM, Lever	1
17	RV2066-05-58	Poly Valve w/Brass T-Handle	1
18	SG-4507F-38-RUB15-P	Spray Gun Assembly, 3/8"x15'	1