

Master Manufacturing 15/25 Gallon Lawn Sprayer Operations/Parts Manual



Assembly/Parts list for

Model SLC-11-015A-MM	15 Gal. Spot Sprayer/Shurflo
Model SLE-11-015A-MM	15 Gal. Spot Sprayer/Delavan
Model SLC-11-025A-MM	25 Gal. Spot Sprayer/Shurflo
Model SLE-11-025A-MM	25 Gal. Spot Sprayer/Delavan

INTRODUCTION

Your sprayer has been manufactured to provide years of dependable and efficient use. Proper operation and maintenance will ensure long satisfactory service. Study this manual carefully to become familiar with the operation and maintenance instructions.

Keep your manual in a safe, convenient place for future reference. Always mention the model and part number in any correspondence. To ensure correct parts service, be sure to use the part number and description when ordering.

ASSEMBLY

- 1.) Remove sprayer from carton and place on a flat surface.
- 2.) Slide wheels onto axels. Place one axel push-nut over the end of the axel and hit lightly with a hammer until push-nut is secure. Repeat with other side of axel.
- 3.) Attach the tongue to the unit with bolts previously installed. Unscrew the 5/16" nuts and insert tongue onto bolts, replace the nuts and tighten securely. Bolt the upper and lower hitch to the tongue with (2) 5/16" bolts and nuts provided. The hitch can be reversed to raise or lower the tongue to better fit your lawn tractor height.
- 4.) Attach the boom mount uprights to the back of the frame with (4) 5/16" bolts and nuts provided. Attach the pre-assembled boom to the boom uprights with the (2) 5/16" bolts and nuts provided. Tighten securely. Thread the hose fitting from the boom onto the garden hose valve located on the pump manifold.
- 5.) Screw the gun clips to the side of the tank with the (2) 10-24 screws provided. Place the hose clamp over the spray gun hose and push the hose onto the barbed fitting on the pump manifold. Using a plier, squeeze the clamp until secure.
- 6.) Slide the "T" end of the cap tether through the hole located on the top of the tank and through the hole located in the top of the cap. Place the tank drain cap tether over the threads of the tank drain opening and tighten the cap to the tank.
- 7.) Plug the wiring harness to the pump.

OPERATION

Operating power is obtained from a 12-volt direct source. Be sure to connect the red to the positive (+) source and attach the black to the negative (-) source.

IMPORTANT: Before spraying chemicals, fill the tank half full of plain water to allow familiarization with the sprayer and to prevent waste of expensive chemicals.

SPRAYER MAINTENANCE

A sprayer is a carefully designed and built machine that should provide many years of reliable service if properly cared for. The main rule in caring for any sprayer is: KEEP IT CLEAN. Neglect costs dollars in repairs, wasted spray material and premature replacement of the sprayer.

CLEANING & STORAGE

Most spray materials are highly corrosive. **The most important aspect of long dependable service from the sprayer is a thorough cleaning immediately following each use.** In addition, the residue of one type of chemical could cause an undesirable effect when a different chemical is used for a different purpose. The most effective cleaning method is to pump several rinses of clean water through the tank, pump, hoses, boom, spray gun, etc. A neutralizing agent such as a solution of Nutra-Sol, a detergent or household ammonia as

recommended by the chemical manufacturer can assist in removal of a persistent chemical. When the system is thoroughly cleaned drain the tank, suction line, pump, hoses, etc.

The following steps should be followed for the maintenance and storage of your sprayer.

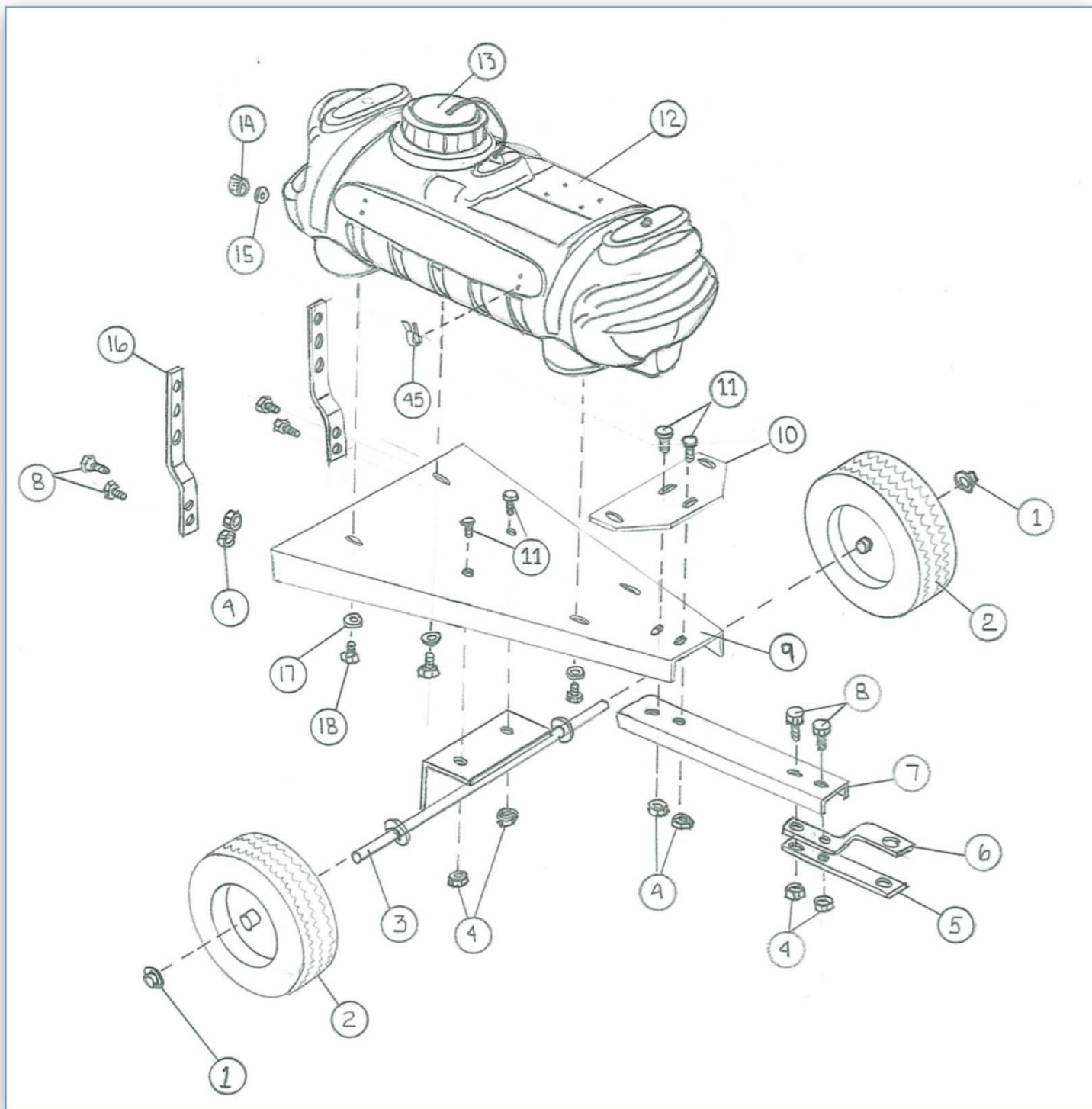
- 1.) Wash and flush out sprayer after completion of each phase of your program. Flush out sprayer when changing chemicals if there is a possibility of the chemicals being incompatible. Use of a detergent is advisable if the chemical manufacturer does not make specific cleaning recommendations. Flush system completely, including nozzles. Never use metal objects to open clogged nozzles.
- 2.) Clean sprayer thoroughly before storing at the end of the spraying season. Permanent type anti-freeze added to the final rinse will leave a rust inhibiting film in parts of the sprayer.

PARTS LIST

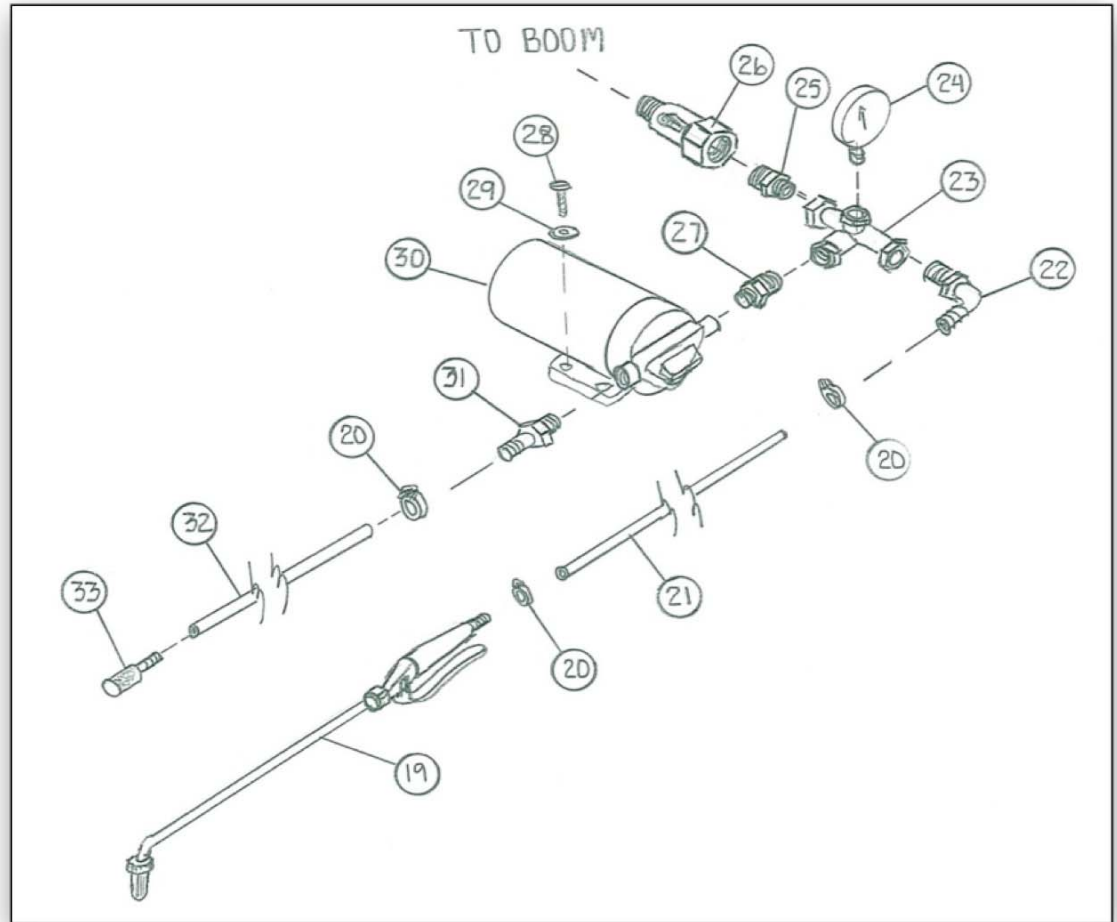
Ref.	Qty.	Part Number	Description
1	2	PW-625019-50H	AXEL CAP, 5/8'
2	2	TWA410/350-4	TIRE, WHEEL ASS.
3	1	32-100019	WELDMENT, AXEL
4	12	33-100113	NUT, FLANGE 5/16-18
5	1	31-100138	HITCH, BOTTOM
6	1	31-100121	HITCH, TOP
7	1	31-100114	TONGUE, SPRAYER
8	8	33-100116	SCREW, CAP, 5/16-18 X 1"
9	1	31-100116	SPRAYER FRAME
10	1	31-100115	FRONT TANK MOUNT, 25 GALLON ONLY
11	4	33-100112	SCREW, CARRIAGE, 5/16-18 X 1"
12	1	33-103231	TANK, 15 GALLON
	1	33-103230	TANK, 25 GALLON
13	1	TL-6B	LID, TANK
14	1	N34	CAP, FGHT
15	1	W406V	WASHER, GARDEN
16	2	31-100119	BOOM MOUNT
17	4	33-100115	WASHER, FLAT 5/16"
18	4	33-100114	SCREW, CAP 5/16-18 X 1/2"
19	1	SG-4507F	GUN, WAND SPRAY
20	9	SHC-F	SNAPPER HOSE CLAMP
21	15FT	3204-1407	HOSE, RUBBER 3/8" X 15 FT
22	1	EL1238	ELBOW, 1/2" MPT X 3/8" HB
23	1	GTT1214	TEE, 1/2" MPT X 1/2" MPT X 1/2" MPT
24	1	1120DSB100	GAUGE, 100 PSI
25	1	E3412	ADAPTOR, 3/4" MGHT X 1/2" MPT
26	1	GHV-1-BLK	GARDEN HOSE VALVE
27	1	M1238	REDUCER, 1/2" MPT X 3/8" MPT
28	4	33-103127	SCREW, MACHINE 10-24 X 1"
29	4	33-103131	WASHER, #10
30	1	33-103232	PUMP, SHURFLO, 1.8GPM
	1	33-103209	PUMP, DELAVAN, 2GPM
31	1	A38	FITTING, 3/8" MPT X 3/8" HB
32	18 IN	3204-1407	HOSE, RUBBER 3/8" X 18 IN
33	1	33-103121	STRAINER, INLET, 3/8" HB
34	2	8027	NOZZLE NUT
35	2	DF3.0	NOZZLE, DEFLECT TIP
36	2	NS-50	STRAINER, 50M
37	2	B12	NOZZLE NUT
38	1	31-100120	BOOM, 7'

39	2	NTL38-C	ELBOW, NOZZLE, 3/8" HB
40	19IN	3204-1407	HOSE, RUBBER 3/8" X 19"
41	1	T38	TEE, 3/8" HB X 3/8" HB X 3/8" HB
42	38IN	3204-1407	HOSE, RUBBER 3/8" X 38 IN
43	1	B34	SWIVEL NUT
44	1	C38	FLAT SEAT HOSE BARB, 3/8"
45	1	GC-100-KIT	CLIP, GUN, PAIR WITH SCREWS
NA	1	33-103233	HARNESS, WIRE SWITCHED (Not shown)
NA	1	SL-MANUAL-MM	MANUAL

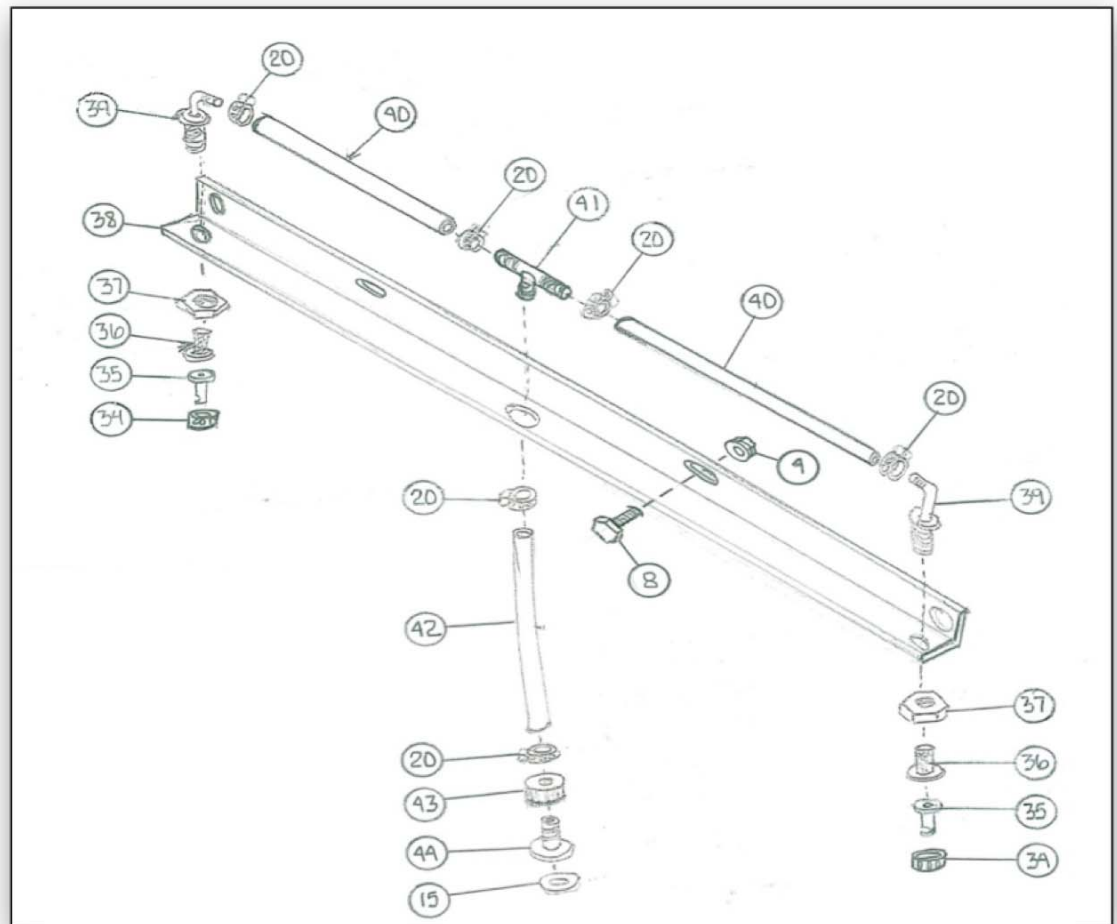
Frame Assembly



Pump Assembly



Boom Assembly



15 & 25 GALLON LAWN SPRAYER
Approximate application rate with (2) DF3.0 NOZZLES and
50 Mesh filter

Gauge Pressure PSI	Flow in GPM	Gallons per Acre 40" spacing						
		3 mph	4 mph	5 mph	6 mph	7 mph	8 mph	9 mph
15	.74	36.4	27.2	21.8	18.2	15.6	13.6	12.2
20	.84	42	31.4	25.4	21	18	15.8	14
25	.94	47	35.2	28.2	23.4	20.2	17.6	15.6
30	1.04	51.4	38.6	30.8	25.8	22	19.2	17.2
35	1.12	55.6	41.6	33.4	27.8	23.8	20.8	18.6

This page intentionally left blank